

Group
Presentation
2026

The logo for The Garden Collective is centered on a dark orange background. It features the word "The" in a small, white, sans-serif font above the word "GARDEN." in a large, bold, white, sans-serif font with a period at the end. Below "GARDEN." is the word "Collective" in a smaller, white, sans-serif font. The background of the entire slide is a dark orange color with several large, overlapping, circular shapes filled with a pattern of thin, parallel, dark orange lines, creating a textured, organic effect.

The
.GARDEN.
Collective

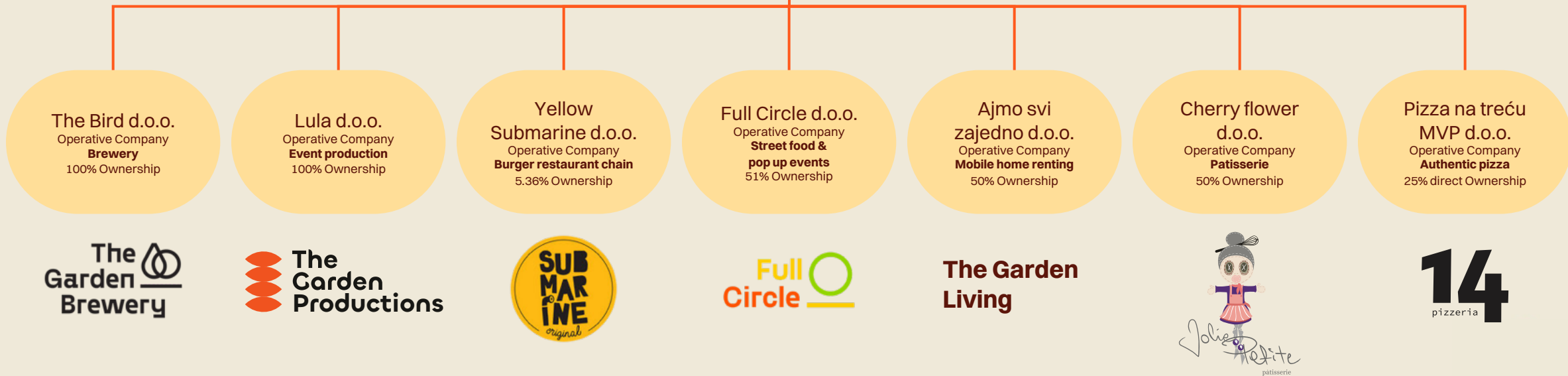


Beer. Events. F&B.
Good times.

Holding company structure



The Garden Collective d.d.
Listed at Zagreb Stock Exchange



Financial highlights

	2024	1-9/2025
Total revenue	€9,801,965	€10,791,576
Sales revenue	€9,698,847	€10,543,337
Other operating income	€103,118	€248,238
EBITDA (IFRS)	€2,513,266	€2,806,210
EBIT (Operating profit)	€907,545	€1,473,872
Earnings before taxes	€838,854	€1,335,425
Net income	€701,351	€1,346,959

The beers

We make numerous styles, *exciting and innovative* but always balanced and consistent

- 350+ beers made across all styles in 10 years
- Experts in maximising the impact of ingredients per spend
- Continued focus on our key best-selling beers, building brands and loyalty



330 ML CORE



440 ML CORE



NOLO



SPECIALS



The Garden Brewery

A top 10 EU Craft Brewery by Volume, balancing cutting edge beers and credibility with large volume deals to supermarkets

Export: 30+ Nations

Established, long-term partnerships

UK	40%
France	17%
Slovenia	7%
Italy	6%
Netherlands	6%
Spain	5%
Ireland	4%
Slovakia	4%
China	4%
Belgium	3%
Germany	2%
Australia	2%

The Garden 
Brewery



The **GARDEN.**
Collective

Demographics and revenue split



Women	Men	Export	Domestic
46.8%	53.2%	47.28%	52.72%
Age	Instagram	Domestic	
18-24	4.4%	On trade - Events	25.35%
25-34	40.9%	On trade - Horeca	37.21%
35-44	39.2%	Off trade - Wholesale	28.29%
45-54	12.3%	Digital	9.14%
55+	3.2%		



Brewery site: Zagreb

40,000HL–34,000 (US, beer).
Opened April 2022. *Top-quality.*

- €2m Capex investment completed
- 400% production capacity increase; further capacity can be easily added
- €2m assets: Brewhouse. Tanks. Canning line. Keg filler. Lab equipment. Centrifuge...
- No external production suppliers (e.g. mobile canning lines) = no risk of infection, delay etc
- Strong QA/QC program: proven, high quality, stable products supplying multiple supermarkets
- Experienced, high quality production staff
- Locked in supply contracts with key suppliers: hops, malts, cans...
- First option on new supplier innovations
- Regional craft partner with Ball (can supplier)
- Voted Best Brewery in EU twice by members of the world's biggest beer club
- IFS (a GFSI) certified brewery
- Solar Power Production (161.98 kWp Rooftop solar power plant)



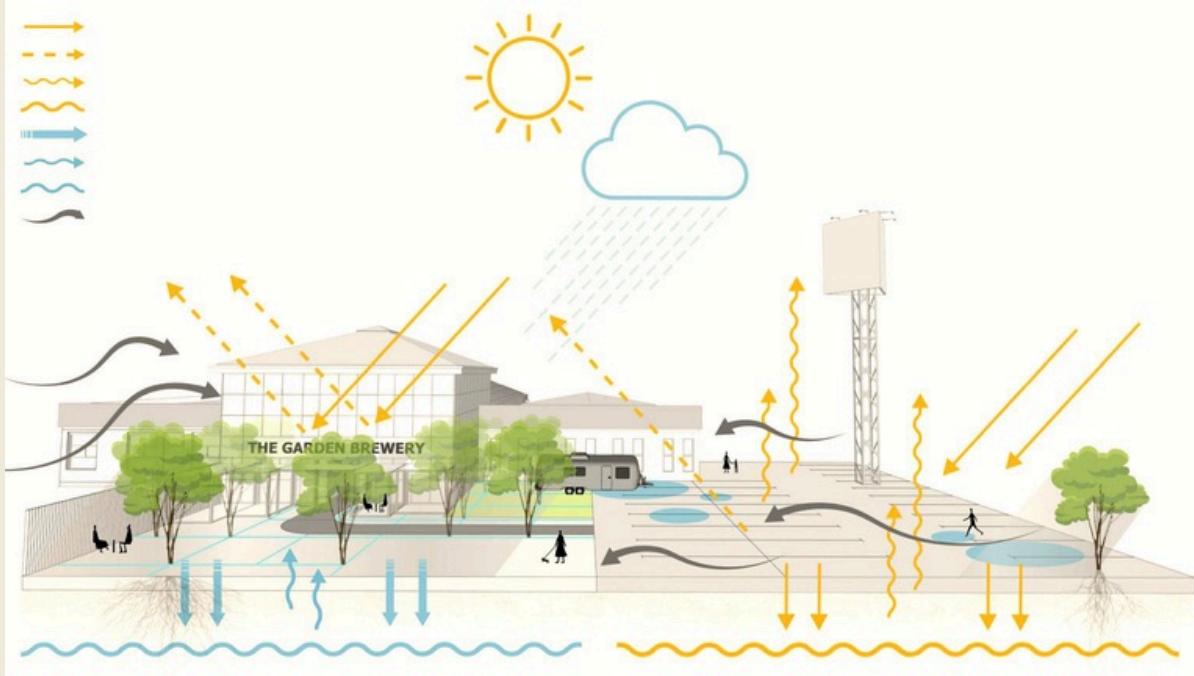
Taproom: Zagreb



Sustainable Build

Large concrete areas were removed to create an urban woodland with its own microclimate and natural shade. We also used fungi instead of chemical fertilizers, water permeable building surface materials, eco-friendly building surface materials and native plants. All better for the environment and our staff and customers.

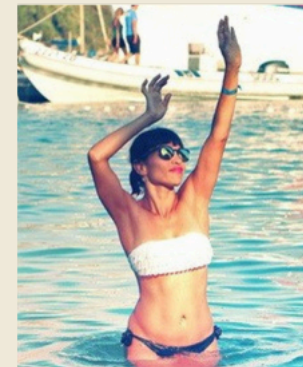
- 1000+ capacity. 80+ seats inside. 400+ seats outside
- 40+ mature trees, climbers and large terrace
- 20+ taps of fresh beer
- 2 permanent food outlets partially owned by us:
Full Circle & Submarine



Festivals & events

This key division runs The Garden Resort & Barbarella's Discotheque; a stunning 70,000m² site on the crystal-clear Adriatic where *we produce 9 music festivals* during the summer season in Tisno

- 40'000+ visitors from 70+ nations
- 5 stages and daily boat parties
- On-site accommodation: apartments, mobile homes and glamping
- Food court, restaurant and shops
- Barbarella's Discotheque: legendary outdoor nightclub (Consistently in Top 100 nightclubs worldwide - DJMag)
- 100'000+ beer sales



2026 Festivals

HOSPITALITY

LOVE
INTERNATIONAL



DEFECTED
CROATIA

DEK
MAN
TEL

SEL
ECTOR

Dimensions

The
GARDEN.
Collective

The Garden Productions also...



- Hosts standout music events at The Garden Taproom each year, including Defected Zagreb, with past guests such as Jazzy Jeff, Kenny Dope and Lee Scratch Perry.
- Provides a full end-to-end production service for external events, delivering F&B from The Garden Collective, music and complete technical support (sound, lighting, staging etc).

Submarine Burgers

Submarine Burgers is a 24-outlet craft burger chain with a permanent presence at The Garden Taproom, adding a recognised food brand and consistent, high-quality burger offer to our venue experience.

Full Circle

Full Circle is led by Marko Palfi, winner of Master Chef Croatia, and also has a permanent presence at The Garden Taproom. His team runs the food court and restaurant at our music festivals, serving meat reared using spent brewery grain, with expansion into multiple locations already planned.



Jolie Petite Patisserie & Pizzeria 14



The latest acquisition within The Garden Collective was completed in 2025, strengthening the group's footprint and adding further scale to our operations. The business will be fully consolidated into The Garden Collective's financial reporting from 2026 onwards, providing a clearer view of group performance and creating a stronger platform for future growth and investment.



The Garden Collective: Combined Capabilities

The Garden Collective unites The Garden Brewery's export expertise with The Garden Productions' long-standing event credentials to deliver seamless, high-quality experiences end to end.

The Garden Brewery brings 10 years of beer export experience, underpinned by 4 million litres of installed production capacity, an experienced brewing and operations team, and established transport partnerships and customs know-how.

The Garden Productions adds over 20 years of event production experience, seasoned F&B management and event design teams, and an in-house Funktion-One audio system to ensure consistently high quality in everything we deliver.



Thank you!

Aleksandra Filipan
The Garden Collective d.d.
investors@thegardencollective.hr

The logo for The Garden Collective, featuring the word "The" in a small, white, sans-serif font above the word "GARDEN." in a large, bold, white, sans-serif font with a period at the end. Below "GARDEN." is the word "Collective" in a smaller, white, sans-serif font. The logo is centered on a dark orange background that features a pattern of large, overlapping, wavy shapes filled with horizontal lines in a lighter shade of orange.

The
.GARDEN.
Collective